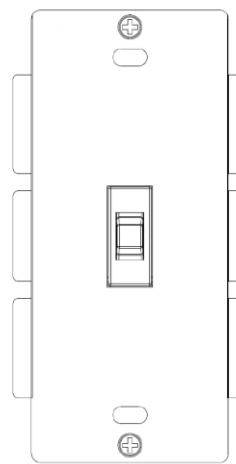


USER MANUAL

ZOOZ™
bright ideas

DIMMER TOGGLE SWITCH VER. 2.0
ZEN24



Z-WAVE CONTROL



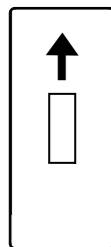
ADD DEVICE to your hub

Initiate inclusion (pairing) in the app (or web interface).

Finalize inclusion at the switch.

TOGGLE UP 3 TIMES

A new on/off switch will show up on your hub's device list. Need a step-by-step guide for your hub? Get in touch: ask@getzooz.com



TROUBLESHOOTING

The switch won't add to your system? Try this:

1. Initiate **EXCLUSION** and toggle the switch down 3 times quickly
2. Toggle the switch up **6-7 times** very quickly when adding it
3. Bring the gateway controller (hub) **closer** to the switch, it may be out of range

FEATURES

- ▶ Manual or remote on/off and dimming control from your mobile device or computer (when included to a Z-Wave gateway hub)
- ▶ Direct 3-way Solution – works with regular 3-way switches (neutral connection required)
- ▶ 2 ramp rate options
- ▶ 500 chip for faster and safer wireless communication
- ▶ Works with LED, CFL, and incandescent bulbs
- ▶ Remembers and restores on/off status after power failure
- ▶ Supported by most Z-Wave gateway controllers
- ▶ Can be used in rules and scenes with other Z-Wave devices for advanced home automation
- ▶ Classic toggle design
- ▶ Air-gap switch for added safety
- ▶ Built-in Z-Wave signal repeater

REMOVE THE SWITCH FROM YOUR HUB

1. Bring your Z-Wave gateway (hub) close to the switch if possible
2. Put the Z-Wave hub into exclusion mode (not sure how to do that? ask@getzooz.com)
3. Toggle the switch down 3 times quickly to finalize the process
4. Your hub will confirm exclusion and the device will disappear from your controller's device list

FACTORY RESET

The switch will be reset to factory defaults only by exclusion using a Z-Wave controller. You may use any certified Z-Wave controller to exclude and reset the switch. This device may not be reset manually when the network's primary controller is missing or otherwise inoperable.

NOTE: All previously recorded activity and custom settings will be erased from the device's memory.

WIRING: READ IT!

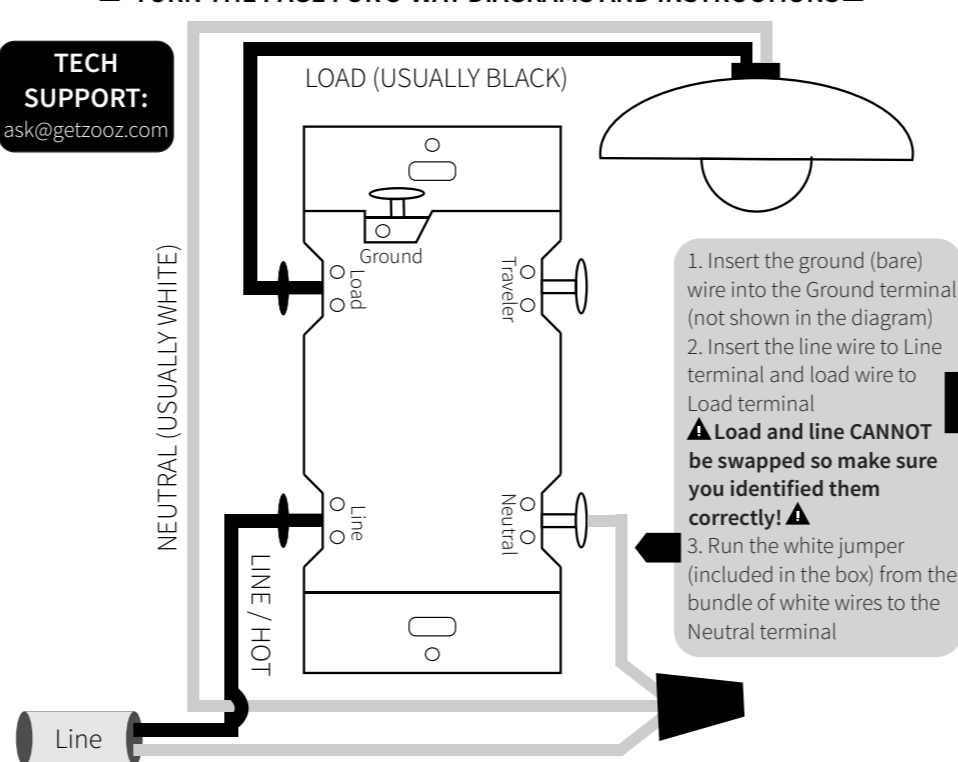
1. **CHECK THE LOAD:** lights only (500W for incandescent, 150W for LED's/CFL's), DON'T CONNECT THIS SWITCH TO FANS.
2. **POWER OFF:** turn the circuit power off in the breaker panel before you start.
3. **CHECK THE WIRES:** mark load (most often black), line (most often black), neutral (most often white), and ground (most often bare). 14AWG wires only! **Don't rely exclusively on your multimeter to identify the wires!**

Not sure what you're seeing?
We'll help: ask@getzooz.com

4. **REMOVE THE OLD SWITCH:** disconnect the wires and label them.
5. **CONNECT THE Z-WAVE SWITCH:** follow all installation steps carefully. Wire the switch **EXACTLY** like in the diagram.

DIMMER TOGGLE SWITCH ZEN24 WIRING DIAGRAM FOR SINGLE POLE INSTALLATION

▶ **TURN THE PAGE FOR 3-WAY DIAGRAMS AND INSTRUCTIONS** ▶



TECH SUPPORT:
ask@getzooz.com

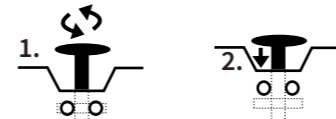
NEUTRAL (USUALLY WHITE)

LOAD (USUALLY BLACK)

1. Insert the ground (bare) wire into the Ground terminal (not shown in the diagram)
2. Insert the line wire to Line terminal and load wire to Load terminal
Load and line CANNOT be swapped so make sure you identified them correctly!
3. Run the white jumper (included in the box) from the bundle of white wires to the Neutral terminal

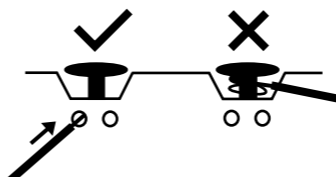
HOW TO INSTALL THE WIRES

1. **UNSCREW:** carefully turn the screw counter clockwise to make space for the wire. DO NOT unscrew completely.



2. **PRESS DOWN:** once it's loose, press the screw down with your finger so it catches the thread.

3. **INSERT WIRE:** make sure the wire is perfectly straight, then insert it to the terminal while holding the screw down. DO NOT wrap wires around the terminal screws!



4. **TIGHTEN:** turn the screw clockwise to tighten the wire. DO NOT OVERTIGHTEN!

CAUTION!

This is an electrical device - please use caution when installing and operating the dimmer switch. Remote control of appliances may result in unintentional or automated activation of power.

Do not use this Z-Wave device to control electric heaters or other appliances which produce the risk of fire, burns, or electrical shock when unattended.

WARRANTY

This Limited Warranty applies to physical goods, and only for physical goods, purchased from Zooz (the "Physical Goods").

What does this limited warranty cover?

This Limited Warranty covers any defects in material or workmanship under normal use according to instructions from the User Manual during the Warranty Period. Warranty coverage applies to purchases made from authorized dealers only. See full list of Zooz distributors here: getzooz.com/buy

During the Warranty Period, Zooz will repair or replace, at no charge, products or parts of a product that prove defective because of improper material or workmanship, under normal use and recommended maintenance. Zooz does not assume the cost of return shipping for warranty service.

This is an UL certified device. UL, just like ETL, is a Nationally Recognized Testing Laboratory. The UL mark is proof of product compliance with North American safety standards.



COMPLETE INSTALLATION

Secure your Z-Wave switch in the box with mounting screws, handling the wires with care. For multi-gang-box installation, you may need to break the heatsink tabs off with pliers to fit the switch next to the neighboring switches.

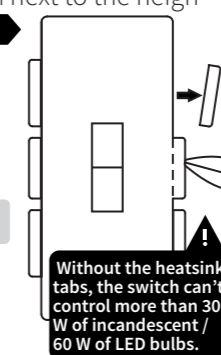
Install the wall plate and restore power to the circuit.

TEST THE SWITCH

Toggle the switch up for ON and toggle it down for OFF.

If the test fails, please check that:

- ▶ power is fully restored to the circuit
- ▶ wiring matches the instructions exactly
- ▶ the type of load is approved and within the specs of this switch



How long does the coverage last?

The Warranty Period for Physical Goods purchased from Zooz is 12 months from the date you purchased this product.

What does this limited warranty not cover?

This Limited Warranty does not cover any problem that is caused by:

- ▶ conditions, malfunctions or damage not resulting from defects in material or workmanship
- ▶ improper handling or installation of the product

The warranty does not cover purchases from unauthorized dealers or second-hand sources. The warranty does not cover return shipping cost for warranty service.

What do you have to do?

To obtain warranty service, please contact us to determine the problem and offer a quick solution for you: warranty@getzooz.com

WARNING

- ▶ This product should be installed indoors upon completion of any building renovations.
- ▶ Prior to installation, the device should be stored in a dry, dust-and-mold-proof place.
- ▶ Do not install the switch in a place with direct sun exposure, high temperature, or humidity.
- ▶ Keep away from chemicals, water, and dust.
- ▶ Ensure the device is never close to any heat source or open flame to prevent fire.
- ▶ Ensure the device is connected to an electric power source that does not exceed the maximum load power.
- ▶ No part of the device may be replaced or repaired by the user.

SPECIFICATIONS

- ▶ Model Number: ZEN24
- ▶ Z-Wave Signal Frequency: 908.42 MHz
- ▶ Power: 120 VAC, 60 Hz
- ▶ **Minimum Load:** 15W for LED and CFL bulbs
- ▶ **Maximum Loads:** 500W single, 400W 2-gang, 300W 3-gang incandescent, 150W CFL or LED
- ▶ Range: Up to 100 feet line of sight
- ▶ Operating Temperature: 32-104° F (0-40° C)
- ▶ Installation and Use: Indoor only

ask@getzooz.com
www.getzooz.com

This device complies with Part 15 of the FCC Rules. Operation is subject to the following conditions:
1. This device may not cause harmful interference,
2. This device must accept any interference received, including interference that may cause undesired operation.

This equipment has been tested and found to comply with the limits for a Class B digital device, pursuant to part 15 of the FCC Rules.

These limits are designed to provide reasonable protection against harmful interference in a residential installation.

This equipment generates, uses and can radiate radio frequency energy and, if not installed and used according to instructions, may cause harmful interference to radio communications.

However, there is no guarantee that interference will not occur in any given installation.

If this equipment causes harmful interference to radio or television reception, the user may try to correct the interference by taking one or more of the following measures:

- Reorient or relocate receiving antenna
- Increase the separation between equipment and receiver
- Connect equipment into a separate outlet or circuit from receiver
- Consult the dealer or an experienced radio/TV technician for additional assistance

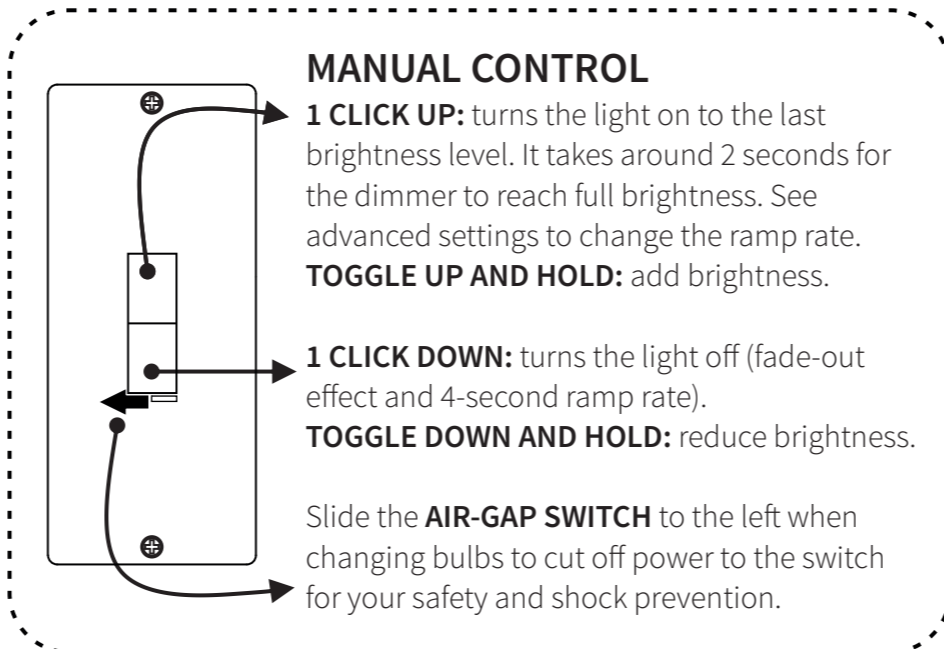
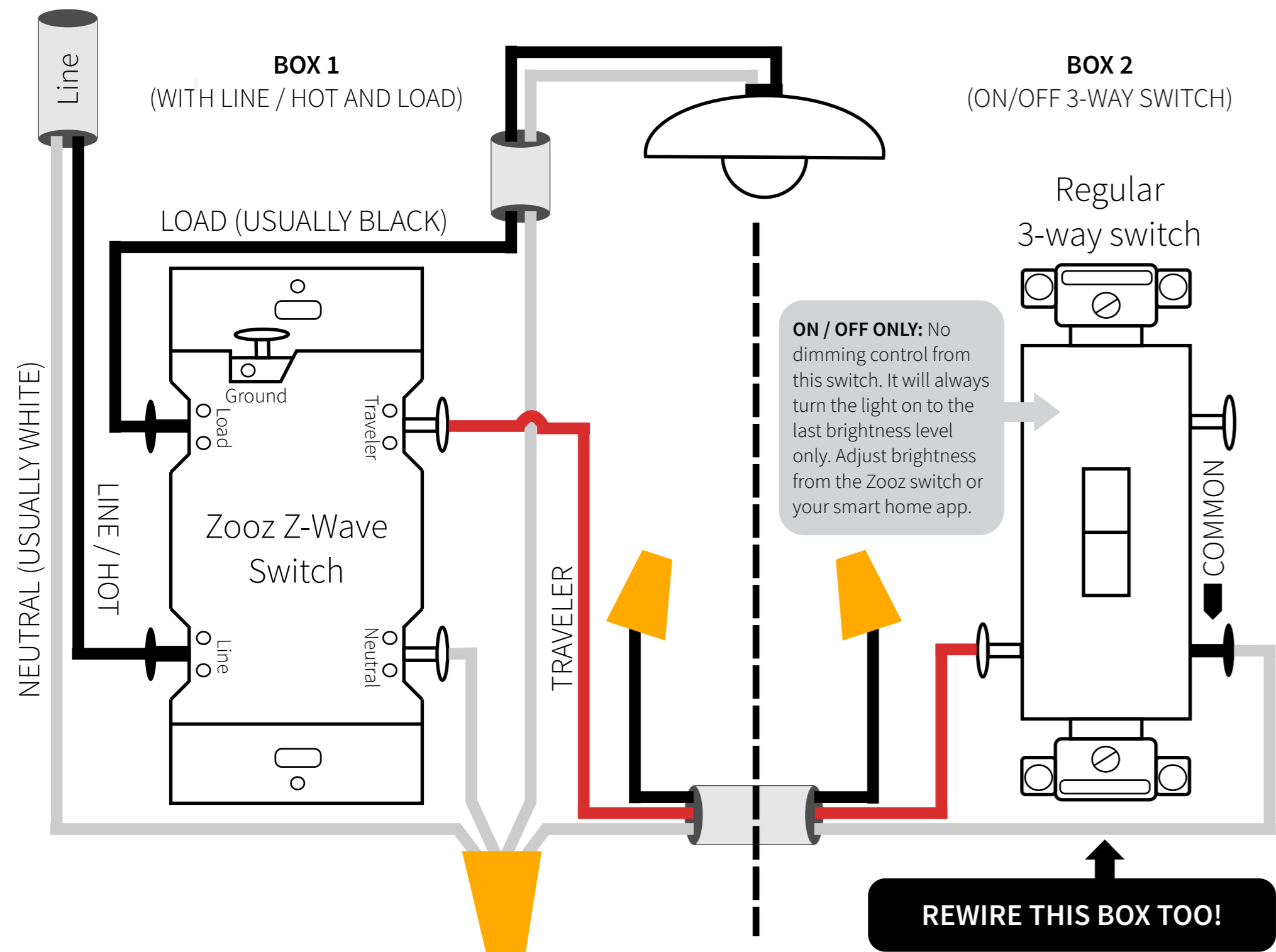
All brand names displayed are trademarks of their respective holders.
© Zooz 2017

FCC NOTE
THE MANUFACTURER IS NOT RESPONSIBLE FOR ANY RADIO OR TV INTERFERENCE CAUSED BY UNAUTHORIZED MODIFICATIONS TO THIS EQUIPMENT. SUCH MODIFICATIONS COULD VOID THE USER'S AUTHORITY TO OPERATE THE EQUIPMENT. STORE INDOORS WHEN NOT IN USE. SUITABLE FOR DRY LOCATIONS ONLY. DO NOT IMMERSE IN WATER. NOT FOR USE WHERE DIRECTLY EXPOSED TO WATER.

3-WAY DIAGRAM FOR 2-POINT CONTROL OF ZOOZ SWITCHES: OPTION 1

3-WAY DIAGRAM FOR 2-POINT CONTROL OF ZOOZ SWITCHES: OPTION 2

Please follow the instructions from the Wiring section of the manual when completing the installation. If you're not sure about the wiring at any point, please consult a licensed electrician. Show these diagrams to your electrician to get them familiarized with Direct 3-Way wiring for electronic switches.



DO NOT connect Zooz Z-Wave switches to a 3-way dimmer. Zooz dimmers and switches can only be wired with mechanical on/off switches in a 3-way setting!

You can also use a **simple 2-terminal on/off switch** if you don't have a 3-way switch in place. Just connect neutral and traveler to any of the two terminals and it will work fine!

To simplify the diagrams, we did not include connections for the ground wire. Remember that all Zooz switches need to be wired according to the electrical code, with **ground wire connected to the ground terminal.**

