

dome



Motion Detector

Thank you for purchasing the DOME Motion Detector, which works with your Z-Wave Certified Controller to monitor areas of your home for movement and ambient light levels.



Figure 1 - Motion Detector Front

Including/Connecting into the Z-Wave Network:

Follow the instructions for your Z-Wave certified Controller to enter inclusion mode.

When prompted by the Controller:

1. For proper inclusion, bring the Motion Detector to within 10 feet of your Controller. After inclusion, the device can be moved to any desired location.
2. Remove the cover of the Motion Detector by twisting it apart.
3. Remove the Battery Tab.
4. Press the Connect Button quickly 3 times in a row.

The LED Indicator will flash five times indicating inclusion.

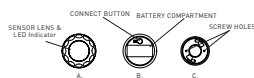


Figure 3 - Parts of the A. Sensor from the Front, B. Sensor from the Rear, and C. MOUNT (WALL MOUNT)

Excluding/Disconnecting from the Z-Wave Network

Follow the instructions for your Z-Wave certified Controller to enter exclusion mode. When prompted by the Controller:

1. Remove the Cover and make sure the Motion Detector is powered.
2. Press the Connect Button quickly 3 times in a row.

The LED Indicator will flash five times indicating exclusion/disconnection.

Resetting the Motion Detector to Factory Settings:

To disconnect from the Z-Wave Network and restore factory default settings:

1. Remove the Cover and make sure the Motion Detector is powered.
2. Hold the Connect Button for 10 seconds until the LED Indicator blinks once, then release the button.

Only do this if the controller is disconnected or otherwise unreachable!

How to Use—Table Top:

You can use the facets on the Sensor Body to properly angle the Motion Detector on a table top or bookshelf to monitor a room.

1. Remove the Magnetic Cradle and store it for later use if needed.
2. Make sure your device is powered on and that there is enough Z-Wave coverage in your installation location.
3. Follow Figure 4 and place the Sensor Body on a flat horizontal surface with an unobstructed view of the area you wish to monitor.

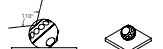


Figure 2 - Using the Motion Detector on a Table Top

How to Use—Wall Mount:

You can mount the Motion Detector on any wall with a central line-of-sight perspective of the area you wish to monitor. See Figure 4 to visualize the Motion Detector's coverage area and its optimal positioning. It is best to mount the Motion Detector as high as possible to avoid limiting its effective range with obstacles like tables and chairs.

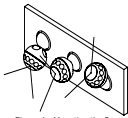


Figure 4 – Mounting the Sensor on a Wall

Installation—With Double Stick Tape:

1. Wipe your wall clean of any dirt and grease.
2. Peel-and-stick the Magnetic Cradle to your wall using the included double-stick tape.
3. Place the Sensor Body on the Magnetic Cradle at an angle to properly monitor your room, and the magnet will hold the Sensor Body in place.

Installation—With Screws:

1. Twist the mount counterclockwise to separate the Magnet from the Wall Mount.
2. Hold the Wall Mount to your wall and drive the included screws through the screw holes.
3. Reattach the Magnet to the Wall Mount.
4. Place the Sensor Body on the Magnetic Cradle at an angle to properly monitor your room, and the magnet will hold the Sensor Body in place.

NEED HELP? CONTACT DOME CUSTOMER SERVICE

If you have questions, our trained Customer Service Department is happy to assist you 24 hours a day, 7 days a week. Contact Dome Customer Service as follows: • In North America dial 1-800-281-7124 • Email Dome at support@dome.com. **DO NOT RETURN THIS PRODUCT TO THE STORE OR WEBSITE FROM WHICH IT WAS PURCHASED** if you believe the product is defective, has a missing or broken part or are having difficulty with it. Please contact Dome as listed above for a quick and efficient solution to the problem.

Legal Notices: This device complies with part 15 of the FCC rules. Operation is subject to the following two conditions: (1) This device may not cause harmful interference, and (2) this device must accept any interference received, including interference that may cause undesired operation.

Note: This equipment has been tested and found to comply with the limits for a Class B digital device, pursuant to part 15 of the FCC Rules. These limits are designed to provide reasonable protection against harmful interference in a residential installation. This equipment generates, uses and can radiate radio frequency energy and, if not installed and used in accordance with the instructions, may cause harmful interference to radio communications.

However, there is no guarantee that interference will not occur in a particular installation. If this equipment does cause harmful interference to radio or television reception, which can be determined by turning the equipment off and on, the user is encouraged to try to correct the interference by one or more of the following measures: Reorient or relocate the receiving antenna; increase the separation between the equipment and the receiver; connect the equipment into an outlet on a circuit different from that to which the receiver is connected; Consult the dealer or an experienced radio/TV technician for help.

This device complies with the Industry Canada license exempt RSS standard(s). Operation is subject to the following two conditions: (1) This device may not cause interference, and (2) this device must accept any interference, including interference that may cause undesired operation of the device.

1 Year Limited Warranty

Elexa Consumer Products, Inc. ("ECP") warrants to the original retail purchaser ("Purchaser") that the DOME Sensor ("Product") will be free of defects in materials or workmanship under use for up to (1) year from the date of purchase (the "Warranty period"). For the Purchaser only, the Product shall perform as specified during the Warranty Period and upon defective performance, ECP will repair or replace the defective or damaged parts of the Product. Normal wear and tear, fire, flood or earthquake, neglect, accident or tampering, this warranty does not cover. This warranty covers only normal use in the United States or Canada. To obtain warranty service during the Warranty Period, call Dome Customer Service (1-800-281-7124) or email support@dome.com. Instructions for returning damaged parts and documentation for a Return Material Authorization (RMA) are located in ECP's user manual. RMA claims must be accompanied by a legible copy of the original receipt showing date and details of purchase. The RMA number must be clearly written on the side of the shipping container in which the return is placed. Defective parts, unless otherwise indicated in the Product manual, be sent freight-pre-paid to the following address:

Elexa Consumer Products, c/o Premier,
1133 Tanager Dr., Egan, IL 60123

ECP will repair or replace the defective parts covered by ECP, not by a shipping method selected by ECP. When returning ECP is shown in RMA, Purchaser may request expedited return shipping at Purchaser's expense.

THIS WARRANTY IS NOT TRANSFERABLE, AND TO THE MAXIMUM EXTENT PERMITTED BY APPLICABLE LAW, IS EXCLUDED BY ALL OTHER WARRANTIES, REPRESENTATIONS AND CONDITIONS, EXPRESS OR IMPLIED, STATUTORY OR OTHERWISE, INCLUDING BUT NOT LIMITED TO THE IMPLIED WARRANTIES OF MERCHANTABILITY AND FITNESS FOR A PARTICULAR PURPOSE, AND OTHER FEDERAL OR REPRESENTATIVE OR AUTHORIZED TO MAKE ANY OTHER WARRANTY, OR ECP OR RESUME FOR ECP ANY OTHER LIABILITY, IN CONNECTION WITH THE SALE OF THIS PRODUCT. IN NO EVENT WILL ECP BE LIABLE FOR ANY DAMAGES, INCLUDING BUT NOT LIMITED TO INCIDENTAL, SPECIAL OR CONSEQUENTIAL DAMAGES ARISING OUT OF THE USE OR INABILITY TO USE THE PRODUCT, INCLUDING DAMAGES DUE TO ECP'S NEGLIGENCE.

THIS WARRANTY GIVES YOU SPECIFIC LEGAL RIGHTS, AND YOU MAY ALSO HAVE OTHER RIGHTS WHICH VARY FROM STATE TO STATE AND COUNTRY TO COUNTRY.

CORRECT DISPOSAL OF BATTERIES IN THIS PRODUCT

This marking on the product, accessories or literature indicates that the product and its electronic accessories should not be disposed of with other household waste. To prevent possible harm to the environment or human health from uncontrolled waste disposal, please separate these items from other types of waste and recycle them responsibly to promote the sustainable reuse of material resources.

Household users should contact either the retailer where they purchased this product, or their government office, for details of where and how they can take these items for environmentally safe recycling.

Business users should contact their supplier and check the terms and conditions of the purchase contract. This product and its electronic accessories should not be mixed with other wastes for disposal.

This marking on the battery manual or packaging indicates that the batteries in this product should not be disposed of with other household waste. Where marked, the chemical symbols Hg, Cd or Pb indicate that the battery contains mercury, cadmium or lead above the reference levels in EC Directive 2006/68. If batteries are not properly disposed of, these substances can cause harm to human health or the environment.

FC # ZS2NAS-PD022

©2014 Elexa Consumer Products, Inc.
2275 Half Day Rd., Suite 332
Bannockburn, IL 60015
www.domeHA.com

