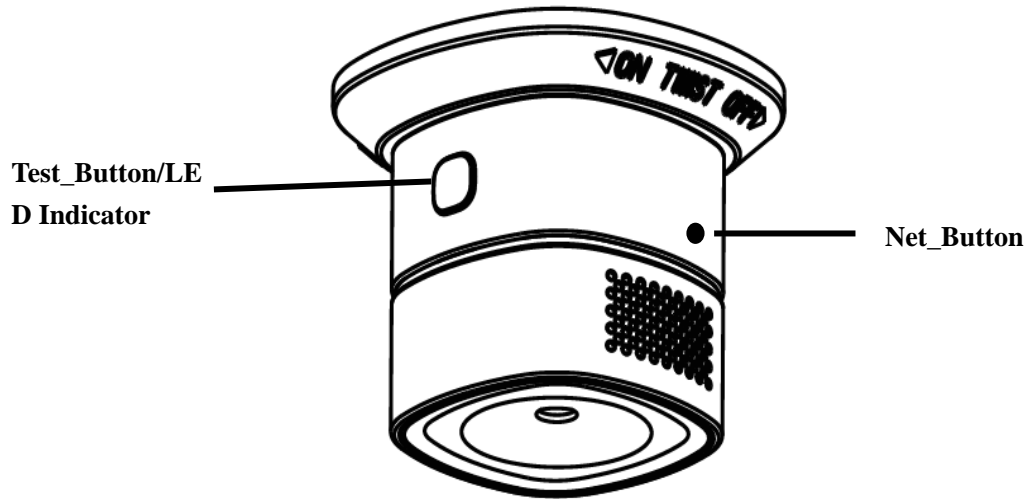


HS1CA-Z

Z-Wave Device Guide Document



1-Device Preheat

Power the device on, a “Di” sound, then green LED, red LED, yellow LED flash alternately about 90 sec, enter into normal model, after that, the device will be able to be included into network.

2-Device Add for Inclusion

- Click [Add] icon in Z-Wave Controller.
- Press the Net_Button 3 times within 1.5s, Green LED is Blinking 3 times within 1 second.
- If Inclusion Process is successful, Green LED will turn off.

3-Device Remove for Exclusion

- Click [Remove] icon in Z-Wave Controller.
- Press the Net_Button 3 times within 1.5s
- If Exclusion Process is successful, Green LED is Blinking 6 times, then turn off.

4-Device test mode

Press Test_Button to test if the device is working normally, red LED quick flashing 4 times, and “Di-Di-Di-Di” sound when CO is detected.

5-Device detection mode

if Inclusion process is successful, the device will report alarm information if detect the status change of CO and no CO . **Red LED flash 4 times every 5 seconds, and “Di-Di-Di-Di” sound** when CO is detected.

6-Device Factory Reset

Long press Net_Button at least 10 seconds in the product.

- Device Reset Locally notification is Transmitted.
- The green LED stays on for 2 seconds and then goes off.

Please use this procedure only when the network primary controller is missing or otherwise inoperable.

7-Association & Association Group Information

- Lifeline between controller and device
- Supported command classes
Battery report, Notification report, and Device Reset Locally notification.
- Association Group description

Association group 1: Lifeline association group

- Maximum supported node is 5.
- Include command classes: Battery report, Notification report, and Device Reset Locally notification,

Association group 2: Root Device group(Basic set)

- Maximum supported node is 5.
- The Sensor sends a Basic Set command to directly trigger devices (like a light, switch, etc.) in response to events. The value of the Basic Set command (e.g. Siren trigger) is configured using CO or no CO

This parameter sets the value sent by the BASIC_SET command to Association Group for CO event		
BASIC_SET Level	0xFF	Turn On Device
This parameter sets the value sent by the BASIC_SET command to Association Group for no CO event		
BASIC_SET Level	0x00	Turn Off Device

-Basic command class version is 2.

8-Notification Report

-Press or release test_button, or CO status is changed(CO detected or no CO detected) , Notification Report is transmitted

Notification Type	Event
CO Alarm (0x02)	Previous Events cleared (0x00)
	Carbon monoxide detected, Unknown Location(0x02)

9-Battery Report

- Battery Report is transmitted when power on the device.
- Battery Report is transmitted once a day.
- Battery Report is transmitted when the battery falls less than 10%
-

Battery Voltage	Battery Level
2.6V ~ 3.0V	0~ 100 (%)
Under 2.6V	0xFF

10-Wake up Notification

- Wake up Notification is transmitted every 24 hours by default.
- Wake up Notification is transmitted when power is turn on.
- Wake up Notification is transmitted when the Press **Net_Button** is Pressed and then released .

11-Devices from multiple manufacturers in one network

- This product can be included and operated in any Z-Wave network with other Z-Wave certified devices from other manufacturers and/or other applicants. All non-battery operated nodes within the network will act as repeaters regardless of vendor to increase reliability of the network.

12-Z-Wave Specifications

12.1-Device Type : Sensor - Notification

12.2-Role Type : RSS (Reporting Sleeping Slave)

12.3-Command Class Support/Control

12.3.1-Z-Wave plus InfoVersion 2

12.3.2-Notification Version 8

12.3.3-Association Version 2

12.3.4-Association Group Info Version 1

12.3.5-Transport Service Version 2

12.3.6-Version Version 3

12.3.7-Manufacturer Specific Version 2

12.3.8-Device Reset Locally Version 1

12.3.9-Powerlevel Version 1

12.3.10-Battery Version 1

12.3.11-Security 2 Version 1

12.3.12-Supervision Version 1

12.3.13-Wake Up Versi on 2

12.3.14-Multi Channel Association Version 3

12.4-The below listed Command Class are all Supported the Security S2

12.4.1-Notification Version 8

12.4.2-Association Version 2

12.4.3-Association Group Info Version 1

12.4.4-Version Version 3

12.4.5-Manufacturer Specific Version 2

12.4.6-Device Reset Locally Version 1

12.4.7-Powerlevel Version 1

12.4.8-Battery Version 1

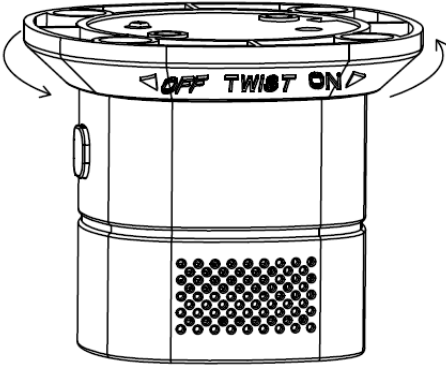
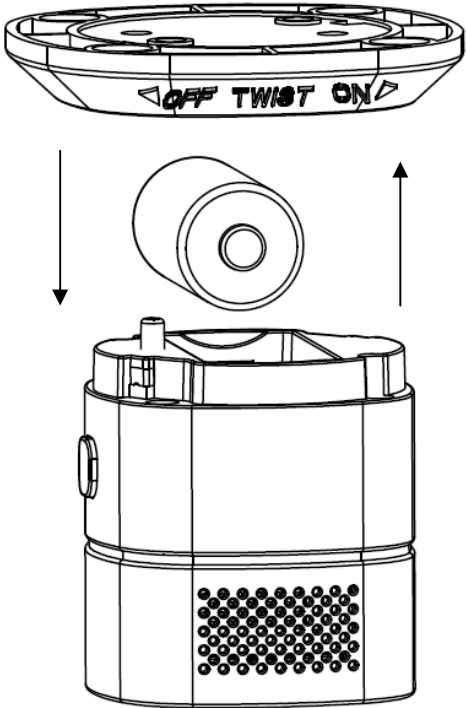
12.4.9-Wake Up Versi on 2

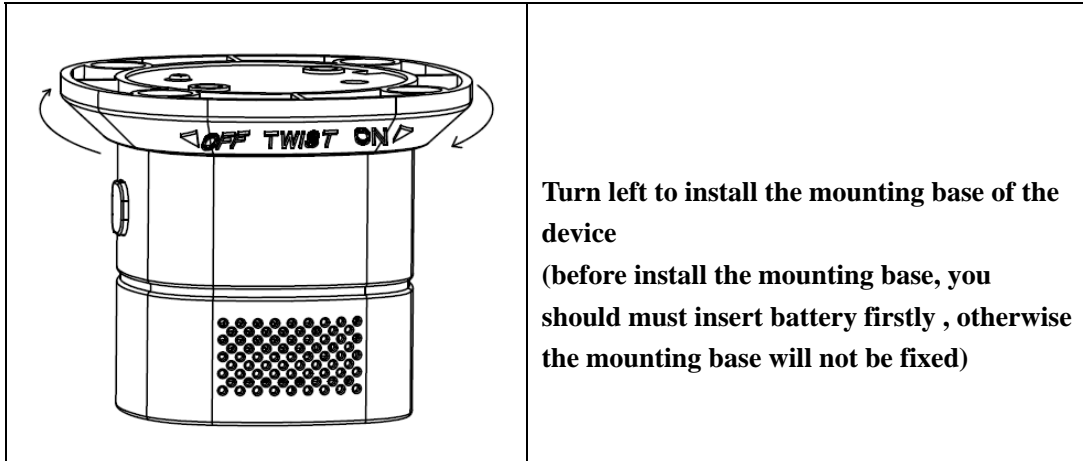
12.4.10-Multi Channel Association Version 3

13-Indicate LED statues description-

status	LED status	Alarm sound
Preheat	Green LED, red LED, yellow	“Di” sound once
Normal	Green LED flash 1 time every 30 seconds	No sound
Test mode	Red LED flash 4 times	“Di-Di-Di-Di” sound loudly
Alarm	Red LED flash 4 times every 5 seconds	“Di-Di-Di-Di” sound loudly
Low battery	Yellow LED flash 1 time every 30 seconds	“Di” sound every 30 seconds
Fault	Yellow LED flash 2 times every 30 seconds	“Di” sound twice every 30 seconds

14-How to replace the batteries

	<p>Turn right to dismantle the mounting base of the device</p>
	<p>1)take out battery from the device 2)Insert the battery into the device (You must be careful of the battery polarity)</p>



15-Technical Specifications

Model No.	HS1CA-Z
RF frequency	868.40- 869.85 MHz
RF operating distance	Up to 100m outdoor line of sight Up to 40m indoor
Powered by	1 x CR123A
Temperature	-10°C ~ 50°C
Humidity	95% max